

A B C D E F G H J K L M N O P R S T U V W

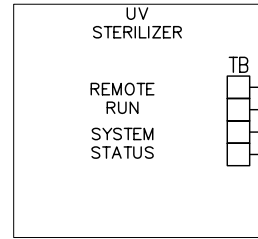
1
2
3
4
5
6
7
8
9
10
11
12
13
14
15
16

DEVICE / INSTRUMENT

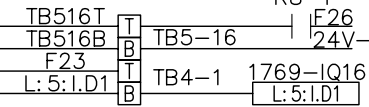
FIELD

CONTROL SYSTEM

UV
STERILIZER
CONTROL

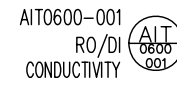


PLC ENCLOSURE

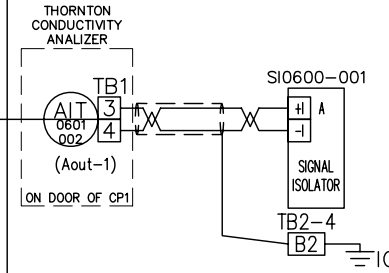


R8-1
F26
24V-
RUN COMMAND REF: E9
RUNNING STATUS REF: E8

AIT 0601-001
RO/DI
RETURN CONDUCTIVITY

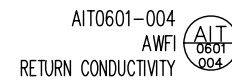


CABLE AIT0600-001

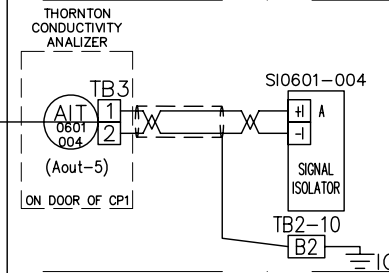


REF: E13

AIT 0601-004
AWFI
RETURN CONDUCTIVITY

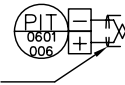


CABLE AIT0601-004



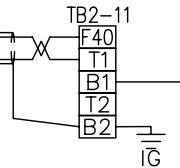
REF: E12

PIT 0601-006
AWFI
RETURN PRESSURE



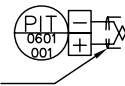
CABLE PIT0601-006(2 COND #18 SHEILDDED)

SHIELD:
FOLD BACK AND
INSULATE WITH
SHRINK TUBE



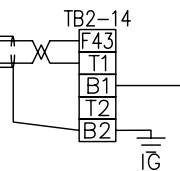
1769-IF16C REF: E12
L:1:I.CH10

PIT 0601-001
AWFI
SUPPLY PRESSURE



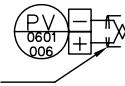
CABLE PIT0601-001(2 COND #18 SHEILDDED)

SHIELD:
FOLD BACK AND
INSULATE WITH
SHRINK TUBE



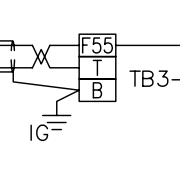
1769-IF16C REF: E12
L:1:I.CH13

PY 0601-006
AWFI
LOOP
PRESSURE VALVE



CABLE PY0601-006(2 COND #18 SHEILDDED)

SHIELD:
FOLD BACK AND
INSULATE WITH
SHRINK TUBE



1769-OF8C REF: E14
L:3:O.CH5

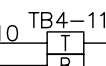
PSE 0601-001
WFI PRESSURE
HIGH ALARM



L:5:I.D10
F23

AWG 16 BLUE
AWG 16 BLUE

L:5:I.D10
F23



TB4-11
1769-IQ16 REF: E8
L:5:I.D10

CLIENT
ANYWHERE TOWN, CA
92123

CLIENT • WFI
03302

REVISIONS
△
△
△
△
△
UV STERILIZER &
MISC. FIELD
WIRING DETAIL

REF: 03302
REV: 9/12/2011
DIP
SCALE: NONE
DRAWN BY: D.EMERSON

E21